

# Decisions Matter: The Brain, Quantum Gravity, and the Universe

---

Author: Lachlan Madden

Affiliation: Independent researcher

E-mail: Lachlan.Madden1994@gmail.com

Orcid id: 0009-0000-8625-691X

## Abstract

This paper aims to describe the generations of particles and waves and describes the type of communication they represent. This paper suggests that communication, decisions, certainty, and their variants are fundamental, and that universe as a whole is communicating the non-contradiction contradiction, or the contradictory non-contradiction, that which one cannot truly know, which is false. This paper introduces an equation for gravity and tries to explain what the result of a quantum gravitational system is, that being mis-gravitation. This paper uses physics to explain biology and uses biology to explain physics.

## Methods

To model the types of communication, the method that was chosen was that there exists a fundamental hierarchy of communication. The hierarchy was chosen based on the assumption that there exists an anti-universe, and that the brain represents that hierarchy. Therefore, it was assumed that there is an objective and subjective reality, for which both sit underneath the hemispheres, for which various general areas stem from both subjective and objective reality areas. To model the general areas of communication, a generalised approach was taken when modelling said areas, where when looking at the universe in a generalised way, one can reduce say for example chemicals, into a general area of chemical communication. Once a general area of communication has been identified, the rule of six was introduced, which states that for every general area, there are six primary areas of communication that stem from the general area. Once a primary area has been identified, it stems into two secondary areas, and into four tertiary areas. To model the generations, the approach that was taken was that there is the quantum world, and the non-quantum world, and perhaps even beyond the quantum and the non-quantum, where each generation represents a type of micro or macro world, where there is the absolute, and the uncertain.

## Results

**Table 1.** Hyper-hemisphere hyper-communication

Type of communication	Left hemisphere	Right hemisphere	Hyper-hemisphere
Poo	Non-poo	Fluid poo	Constipated diarrhoea
Sense (what) of sight	Blind	Fluidly seeing	Blindsight
Photo	Non-photo	Fluid photo	Video
Question	Non-question	Fluid question	Rhetorical question
Answer	Non-answer	Fluid answer	"I don't have an answer"
Noun	Non-name	Fluid name	Acronym
Sense of life	Non-alive (dead)	Fluidly alive	Tonic immobility
Truth	Non-truth	Fluid truth	Downplaying
Lie	Non-lie	Fluid lie	Exaggeration
Program	Non-program	Fluid program	Hyper-fluid program
Thrust	Non-thrust	Fluid thrust	Hyper-fluid thrust

**Table 2.** Generations of left hemisphere

<b>Generation</b>	<b>Generation absolute zero</b>	<b>Generation positive zero</b>	<b>Generation one</b>
<b>Left hemisphere</b>	Between beyond non-quantum and beyond anti-quantum	Absolutely beyond non-quantum	Beyond non-quantum
<b>Generation</b>	<b>Generation two</b>	<b>Generation three</b>	<b>Generation four</b>
<b>Left hemisphere</b>	Absolute non-quantum	Non-quantum	Between non-quantum and quantum
<b>Generation</b>	<b>Generation five</b>	<b>Generation six</b>	<b>Generation seven</b>
<b>Left hemisphere</b>	Quantum	Absolute quantum	Beyond quantum
<b>Generation</b>	<b>Generation eight</b>	<b>Generation absolute eight</b>	
<b>Left hemisphere</b>	Absolutely beyond quantum	Between beyond non-quantum and beyond quantum	

**Table 3. Generations of right hemisphere**

<b>Generation</b>	<b>Generation absolute zero</b>	<b>Generation positive zero</b>	<b>Generation one</b>
<b>Right hemisphere</b>	Between beyond quantum and beyond anti-non-quantum	Absolute beyond quantum	Beyond quantum
<b>Generation</b>	<b>Generation two</b>	<b>Generation three</b>	<b>Generation four</b>
<b>Right hemisphere</b>	Absolute quantum	Quantum	Between quantum and non-quantum
<b>Generation</b>	<b>Generation five</b>	<b>Generation six</b>	<b>Generation seven</b>
<b>Right hemisphere</b>	Non-quantum	Absolute non-quantum	Beyond non-quantum
<b>Generation</b>	<b>Generation eight</b>	<b>Generation absolute eight</b>	
<b>Right hemisphere</b>	Absolute beyond non-quantum	Between beyond non-quantum and beyond quantum	

**Table 4. Generations of anti-left hemisphere**

<b>Generation</b>	<b>Generation absolute zero</b>	<b>Generation anti-positive zero</b>	<b>Generation one</b>
<b>Left side right hemisphere</b>	Between beyond quantum and beyond anti-non-quantum	Absolute beyond anti-non-quantum	Beyond anti-non-quantum
<b>Generation</b>	<b>Generation two</b>	<b>Generation three</b>	<b>Generation four</b>
<b>Left side right hemisphere</b>	Absolute anti-non-quantum	Anti-non-quantum	Between anti-non-quantum and anti-quantum
<b>Generation</b>	<b>Generation five</b>	<b>Generation six</b>	<b>Generation seven</b>
<b>Left side right hemisphere</b>	Anti-quantum	Absolute anti-quantum	Beyond anti-quantum
<b>Generation</b>	<b>Generation eight</b>	<b>Generation absolute eight</b>	
<b>Left side right hemisphere</b>	Absolute beyond anti-quantum	Between anti-non-quantum and anti-quantum	

**Table 5. Generations of anti-right hemisphere**

<b>Generation</b>	<b>Generation absolute zero</b>	<b>Generation positive zero</b>	<b>Generation one</b>
<b>Right side left hemisphere particles</b>	Between beyond non-quantum and beyond anti-quantum	Absolutely beyond anti-quantum	Beyond anti-quantum
<b>Generation</b>	<b>Generation two</b>	<b>Generation three</b>	<b>Generation four</b>
<b>Right side left hemisphere particles</b>	Absolute anti-quantum	Anti-quantum	Between anti-quantum and anti-non-quantum
<b>Generation</b>	<b>Generation five</b>	<b>Generation six</b>	<b>Generation seven</b>
<b>Right side left hemisphere particles</b>	Anti-non-quantum	Absolute anti-non-quantum	Beyond anti-non-quantum
<b>Generation</b>	<b>Generation eight</b>	<b>Generation absolute eight</b>	
<b>Right side left hemisphere particles</b>	Absolutely beyond anti-non-quantum	Between anti-non-quantum and anti-quantum	

**Table 6. Dimensions**

<b>Generation</b>	<b>Generation absolute zero</b>	<b>Generation positive zero</b>	<b>Generation one</b>
<b>Dimensions</b>	Non-dimension	Positive zero dimension	One dimension
<b>Generation</b>	<b>Generation two</b>	<b>Generation three</b>	<b>Generation four</b>
<b>Dimensions</b>	Two dimensions	Three dimensions	Four dimensions
<b>Generation</b>	<b>Generation five</b>	<b>Generation six</b>	<b>Generation seven</b>
<b>Dimensions</b>	Five dimensions	Six dimensions	Seven dimensions
<b>Generation</b>	<b>Generation eight</b>	<b>Generation absolute eight</b>	
<b>Dimensions</b>	Eight dimensions	Absolute eight dimensions	

**Table 7. Directions of dimensions of the right hemisphere**

<b>Direction</b>	<b>Through yet amongst – Hyper-amongst</b>	<b>In</b>	<b>Forwards</b>
<b>Dimensions</b>	Nothing dimension	Positive zero dimension	One dimension
<b>Particle direction</b>	<b>In front</b>	<b>Right</b>	<b>Beside</b>
<b>Dimensions</b>	Two dimensions	Three dimensions	Four dimensions
<b>Particle direction</b>	<b>Up</b>	<b>Above</b>	<b>Jump</b>
<b>Dimensions</b>	Five dimensions	Six dimensions	Seven dimensions
<b>Particle direction</b>	<b>Over</b>	<b>Off On – hyper on</b>	
<b>Dimensions</b>	Eight dimensions	Absolute eight dimensions	

**Table 8. Directions of dimensions of the left hemisphere**

<b>Direction</b>	<b>Amongst through – hyper-through</b>	<b>Out</b>	<b>Backwards</b>
<b>Dimensions</b>	Nothing dimension	Positive zero dimension	One dimension
<b>Wave direction</b>	<b>Behind</b>	<b>Left</b>	<b>Apart</b>
<b>Dimensions</b>	Two dimensions	Three dimensions	Four dimensions
<b>Wave direction</b>	<b>Down</b>	<b>Below</b>	<b>Fall</b>
<b>Dimensions</b>	Five dimensions	Six dimensions	Seven dimensions
<b>Wave direction</b>	<b>Under</b>	<b>Off On – hyper on</b>	
<b>Dimensions</b>	Eight dimensions	Absolute eight dimensions	

**Table 9. Anti-right hemisphere directions**

<b>Direction</b>	<b>Amongst through – hyper-through</b>	<b>In out</b>	<b>Forwards backwards</b>
<b>Dimensions</b>	Zero dimensions	Positive zero dimension	One dimension
<b>Direction</b>	<b>In front behind</b>	<b>Right side left</b>	<b>Beside apart</b>
<b>Dimensions</b>	Two dimensions	Three dimensions	Four dimensions
<b>Direction</b>	<b>Upside down</b>	<b>Above below</b>	<b>Jumping fall</b>
<b>Dimensions</b>	Five dimensions	Six dimensions	Seven dimensions
<b>Direction</b>	<b>Over under</b>	<b>On off – hyper off</b>	

**Table 8. Certainty**

<b>Generation of particles</b>	<b>Absolute zero</b>	<b>Positive zero</b>	<b>One</b>
<b>Certainty</b>	Between certain non-certainty and certain fluid anti-certainty	Certain non-certainty	Uncertain non-certainty
<b>Generation of particles</b>	<b>Two</b>	<b>Three</b>	<b>Four</b>
<b>Certainty</b>	Certain mis-certainty	Uncertain mis-certainty	Certainly uncertain bi-certainty
<b>Generation of particles</b>	<b>Five</b>	<b>Six</b>	<b>Seven</b>
<b>Certainty</b>	Uncertain certainty	Certainly certain	Uncertain fluid certainty
<b>Generation of particles</b>	<b>Eight</b>	<b>Absolute eight</b>	
<b>Certainty</b>	Certain fluid certainty	Between certain non-certainty and certain fluid certainty	

**Table 9. Generations of right hemisphere position communication**

<b>Generation</b>	<b>Absolute zero</b>	<b>Positive zero</b>	<b>One</b>
<b>Type of position</b>	Certain non-certainty yet anti-certain fluid certainty it's fluid anti- positionless non- position – Hyper-non- position	Certain non-certainty it's positionless	Uncertain non- certainty it's positionless
<b>Generation</b>	<b>Two</b>	<b>Three</b>	<b>Four</b>
<b>Type of position</b>	Certain mis-certainty of misposition	Uncertain mis- certainty of misposition	Certainly uncertain bi- certainty it's either misposition or position and you can't decide which, so you make an undecided decision it's both, un-positioned
<b>Generation</b>	<b>Five</b>	<b>Six</b>	<b>Absolute six</b>
<b>Type of position</b>	Uncertain certainty of position	Certain certainty of its position	Uncertain certainty it's fluid position
<b>Generation</b>	<b>Eight</b>	<b>Absolute eight</b>	
<b>Type of position particles</b>	Fluid certain certainty it's fluid position	Between certain non- certainty and fluid certainty that it's positionless position – hyper-certain of hyper- position	

**Table 10. Generations of momentum**

<b>Generation</b>	<b>Absolute zero</b>	<b>Positive zero</b>	<b>One</b>
<b>Type of momentum</b>	Certain non-certainty yet anti-certain fluid certainty it's fluid anti-momentum non-momentum – Hyper-non-momentum	Certain non-certainty its momentum-less	Uncertain certainty its momentum-less
<b>Generation</b>	<b>Two</b>	<b>Three</b>	<b>Four</b>
<b>Type of momentum</b>	Certain mis-certainty of its mis-momentum	Uncertain mis-certainty of its mis-momentum	Certainly uncertain bi-certainty it's either mis-momentum or momentum, so you make an undecided decision it's both, therefore its un-momentum
<b>Generation</b>	<b>Five</b>	<b>Six</b>	<b>Seven</b>
<b>Type of momentum</b>	Uncertain certainty of its momentum	Certain certainty of its momentum	Uncertain fluid certainty it's fluid momentum
<b>Generation</b>	<b>Eight</b>	<b>Absolute eight</b>	
<b>Type of momentum</b>	Certain fluid certainty its fluid momentum	Non-certain certainty yet certain fluid certainty its non-momentum momentum – hyper-certain its hyper-momentum	

**Table 11. Generation of decision**

<b>Generation</b>	<b>Absolute zero</b>	<b>Positive zero</b>	<b>One</b>
<b>Type of right hemisphere decision</b>	Absolute anti-non-decision non-decision– a hyper-non-decision	Absolute non-decision	Non-decision
<b>Generation</b>	<b>Two</b>	<b>Three</b>	<b>Four</b>
<b>Type of right hemisphere decision</b>	Absolute mis-decision	Mis-decision	Undecided decision
<b>Generation</b>	<b>Five</b>	<b>Six</b>	<b>Seven</b>
<b>Type of right hemisphere decision</b>	Decision	Absolute decision	Fluid decision
<b>Generation</b>	<b>Eight</b>	<b>Absolute eight</b>	
<b>Type of right hemisphere decision</b>	Absolute fluid decision	Absolute non-decision fluid decision – a hyper-decision	

**Table 12. Shapes**



<b>Generation of dimension</b>	<b>Generation absolute zero dimensions</b>	<b>Generation positive zero dimension</b>	<b>Generation one dimension</b>
<b>Shape</b>	No shape	Point	String
<b>Generation of dimension</b>	<b>Generation two dimensions</b>	<b>Generation three dimensions</b>	<b>Generation four dimensions</b>
<b>Shape</b>	String loop without volume	Square	Semi-circle
<b>Generation of dimensions</b>	<b>Generation five dimensions</b>	<b>Generation six dimensions</b>	<b>Generation seven dimensions</b>
<b>Shape</b>	Semi-cylinder	Semi-capsule	Cube
<b>Generation of dimensions</b>	<b>Generation 8</b>	<b>Generation absolute 8</b>	
<b>Shape</b>	Semi-sphere	Sphere	

**Table 13. Is it particles or waves in the right hemisphere?**

<b>Generation</b>	<b>Generation zero</b>	<b>Generation positive zero</b>	<b>Generation one</b>
<b>Particle or wave?</b>	Beyond anti-non-field non-field – between beyond quantum and beyond anti-non-quantum	Absolute non-field– absolute beyond quantum	Non-particle – beyond quantum
<b>Generation</b>	<b>Generation two</b>	<b>Generation three</b>	<b>Generation four</b>
<b>Particle or wave?</b>	Absolute particle – absolute quantum	Particle – quantum	Wave-particle, or is it a particle-wave? non-quantum yet quantum – hyper quantum? Hyper-non-quantum> You can't decide which so you decide it's both
<b>Generation</b>	<b>Generation five</b>	<b>Generation six</b>	<b>Generation seven</b>
<b>Particle or wave?</b>	Wave – non-quantum	Absolute wave – absolute non-quantum	Fluid field – beyond non-quantum
<b>Generation</b>	<b>Generation eight</b>	<b>Generation absolute eight</b>	
<b>Particle or wave?</b>	Absolute fluid field – absolute beyond non-quantum	Non-field fluid field – hyper-wave – between beyond quantum and beyond non-quantum	

Considering the seven questions of each type of communication, with one question being where? Where translates to space, and when translates to time. So therefore the types of space decisions, where decisions, are represented in the table below.

**Table 14. Generations of where (in space) decisions**

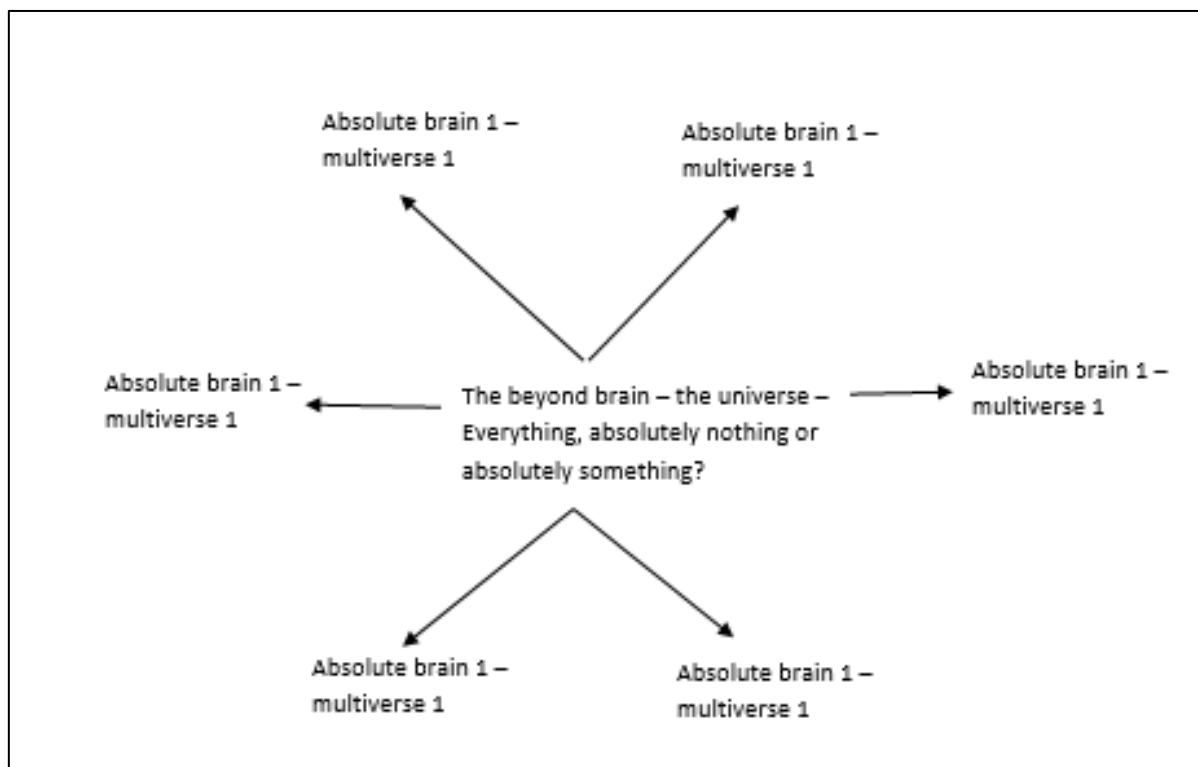
Generation of space	Absolute zero	Positive zero	One
Right hemisphere space	Hyper-non-space	Absolute non-space	Non-space (No-space)
Generation of space	Two	Three	Four
Right hemisphere space	Absolute mis-space	Mis-space	Un-space
Generation of space	Five	Six	Seven
Right hemisphere space	Space	Absolute space	Fluid space
Generation of space	Eight	Absolute eight	
Right hemisphere space	Absolute fluid space	Hyper-space (Absolute no-space yet absolute fluid-space)	

**Table 15. The values of right hemisphere**

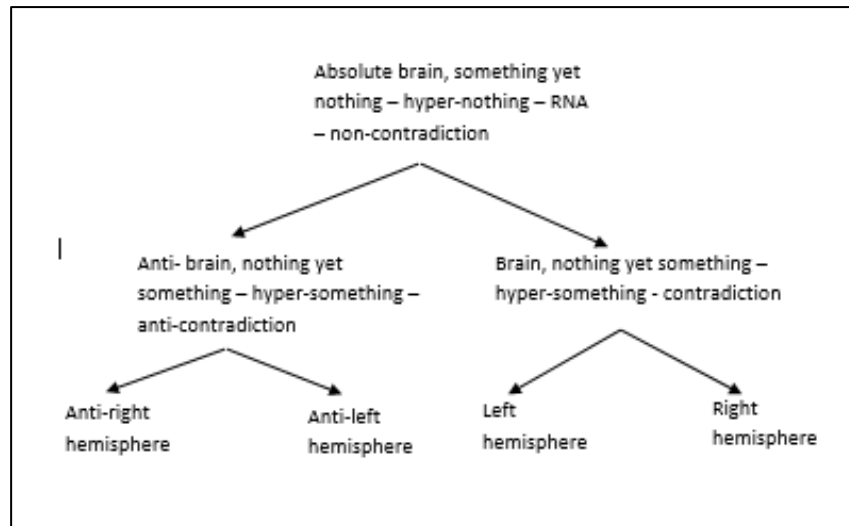
Generation	Generation zero	Generation positive zero	Generation one
Value	Between a non-value and an anti-non-value (fluid value) – absolute fluid non-value – hyper-non-value	Certain non-certainty of absolute non-value – no possible value – Absolute beyond quantum	Uncertain non-certainty of non-value – no possible value – beyond quantum
Generation	Generation two	Generation three	Generation four
Value	Certain mis certainty of negative value – absolute quantum	Uncertain mis-certainty of negative value - quantum	Certainly uncertain bi-certainty of un-value.- Can't decide that it's either negative or positive so it's both, a zero
Generation	Generation five	Generation six	Generation seven
Value	Uncertain positive value	Certain positive value	Fluid uncertain certainty of fluid value
Generation	Generation eight	Generation absolute eight	
Value	Fluid certain certainty of fluid value	Non-certain fluid certainty of non-valued fluid value – Hyper-fluid-value -undefined fluid value	

**Table 16. The 8 questions**

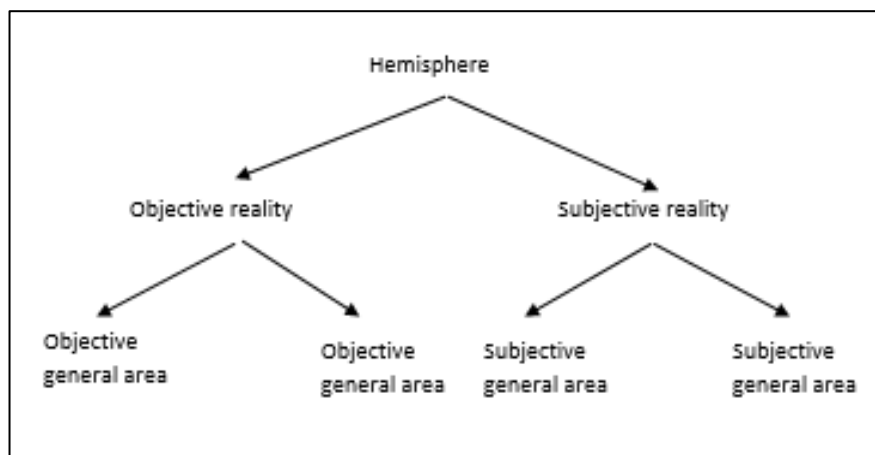
Question	Subjective	Objective	Subjectively objective (hemisphere)	Objectively subjective
Which?	Interpretation	Communication	Interpretation communication	Communication interpretation
What?	Imagination	Sense	Imaginary sense	Sensing imagination
When?	Memory	Perception	Memory perception	Perception memory
Why?	Opinion	Information	Opinionated information	Information opinion
Where?	Processing	Recognition	Processing recognition	Recognising processing
Way?	Leading	Direction	Leading direction	Direction leading
Who?	Identity	Identification	Identity identification	Identification identity
How?	Signal	Message	Signal message	Message signal



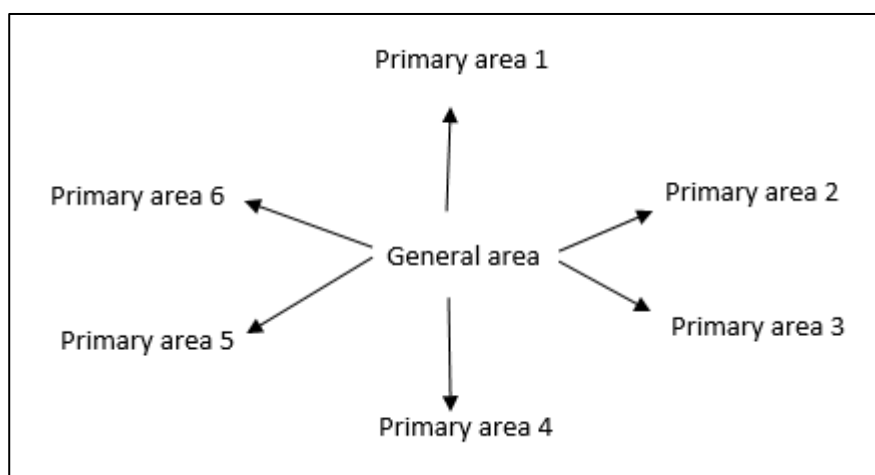
**Figure 1. Multiverse of all possible brains**



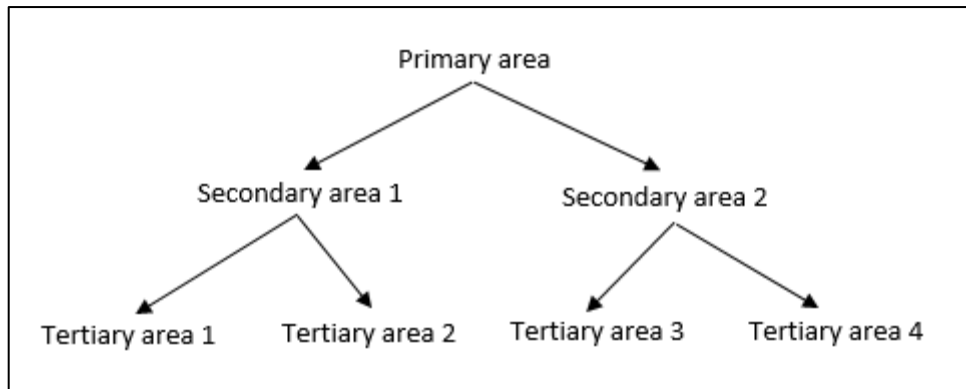
**Figure 2. Top layer of brain hierarchy communication**



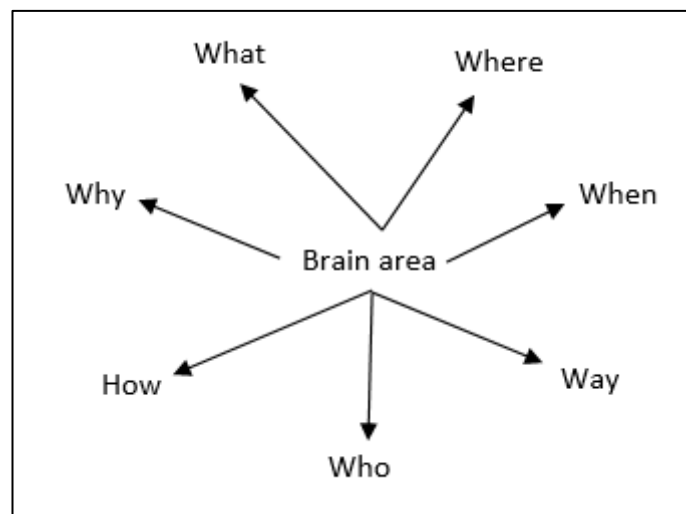
**Figure 3. Sub areas of right hemisphere communication**



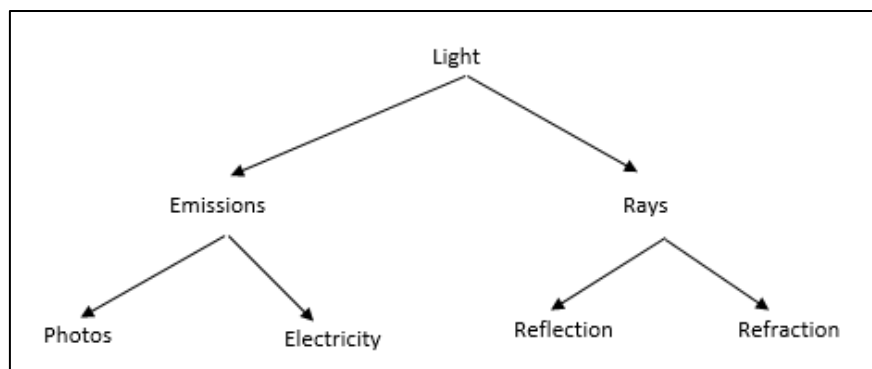
**Figure 4. General area sub area communication**



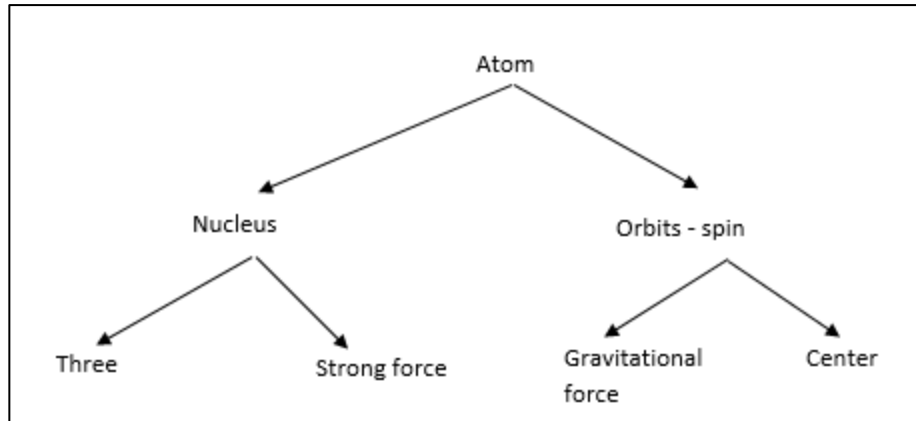
**Figure 5. Primary area and sub area communication**



**Figure 6. Brain area communication and associated decisions**



**Figure 7. Light and sub areas of communication**



**Figure 8. Atom and sub areas of communication**

## Discussion

For every type of communication in this universe there exists seven questions. That being the what, the where, the when, the how, the who, the why, and the way, and the eighth question, being which communication is it? For example, which communication, the communication of gravity having seven questions. The where (in space) may possibly be circumference, the when (in time) possibly being the radius, and the what (in spacetime) being the acceleration, creating an equation, where:

$$Perception = \frac{Sense}{Recognition}$$

$$g \text{ acceleration} = \frac{Circumference}{Radius \text{ (of the inner core)}}$$

So, therefore, when working out earth's gravity:

$$g = \frac{40075km}{1220km}$$

$$g = 32.8483km$$

$$g = 9.1245m$$

Admittedly, there is some discrepancy comparing this answer to the accepted gravity of earth's surface of  $9.80665m/s^2$ .

So, what would be the radius of the core if earths gravity is equal to  $9.80665m/s^2$ ?

$$Radius = \frac{40,075km}{9.80665m/s^2 \times 3.6}$$

$$Radius = \frac{40075km}{35.30394km}$$

$$Radius \text{ of earths inner core} = 1135.1424km$$

Therefore does the earths inner core have an estimated 1135km radius? If the earths core is equal to 1135km, then this can be used in the equation to estimate the gravitational acceleration, where:

$$g = \frac{40,075km}{1135.1424km}$$

$$g = 35.30394km/s^2$$

Where converted into meters per second squared:

$$g = 9.80665m/s^2$$

What about the moon? If the hypothesised answer for gravitational acceleration appears in an equation triangle, where:

$$1 \text{ equation triangle} = \frac{\text{Circumference}}{\text{Radius(core)} \times \text{acceleration}}$$

then hypothetically, it could be used to also find out the size of the moons core, where:

$$\text{Radius} = \frac{10,916.985km}{1.62m/s^2 \times 3.6}$$

$$\text{Radius} = 1871.9110km$$

Which almost equals the radius of the entire moon itself, which is [5] 1738.1km. Why is it bigger and why is it wrong? And is it possible that the entire moon is the core? Is the moons gravity 1.62m/s<sup>2</sup> or is it 1.74m/s<sup>2</sup>? For example, to estimate the moons gravitational acceleration, and under the assumption that the entire moon is the inner core, where:

$$g = \frac{10,916.985km}{1,737.4km}$$

$$g = 6.283518km/s^2$$

Where converting it into meters per second:

$$g = 1.74542m/s^2$$

Therefore, given each question of communication has seven sub-questions, each question is reflected in the decision dimensions, where the total of all seven decision dimensions determining the type of communication of that gravity, whether it's hyper-non-communicating hyper-non-gravity, non-communicating non-gravity (beyond quantum), mis-communicating mis-gravity (quantum), un-communicating un-gravity (half quantum half non-quantum, hyper-quantum or hyper-non-quantum? You can't decide which so you decide it's both) communicating gravity (non-quantum), fluidly communicating fluid-gravity (beyond non-quantum), and hyper-communicating (non-communication communication of beyond quantum yet beyond non-quantum – hyper-beyond non-quantum) of hyper- fluid gravity. For example, one decision area may be a mis-decision, another decision area may be a fluid decision, another decision area may be an undecided decision, and so on, equalling a certain generation of the communication of gravity. If all decision dimensions of a right hemisphere is equal to a six dimensional decision (absolute non-quantum), equalling forty two decision dimensions in total, then therefore it's absolutely communicating a six dimensional communication of an absolute non-quantum certainly certain decision. Therefore given quantum mis-communication, as quantum mechanics is fundamentally mis-communication, quantum

gravitational mis-acceleration has a value, however the true value is not what it seems. So therefore, the question to ask is what is mis-acceleration? Perhaps it is deceleration. Therefore it is suggested that a quantum gravitational system decelerates, instead of accelerating. The next question to ask would be what is a mis-circumference, the opposite of circumference, and where is the mis-radius, the opposite of a radius. The final equation of course may look like:

$$-g = \frac{\textit{Opposite of circumference}}{\textit{opposite of radius}}$$

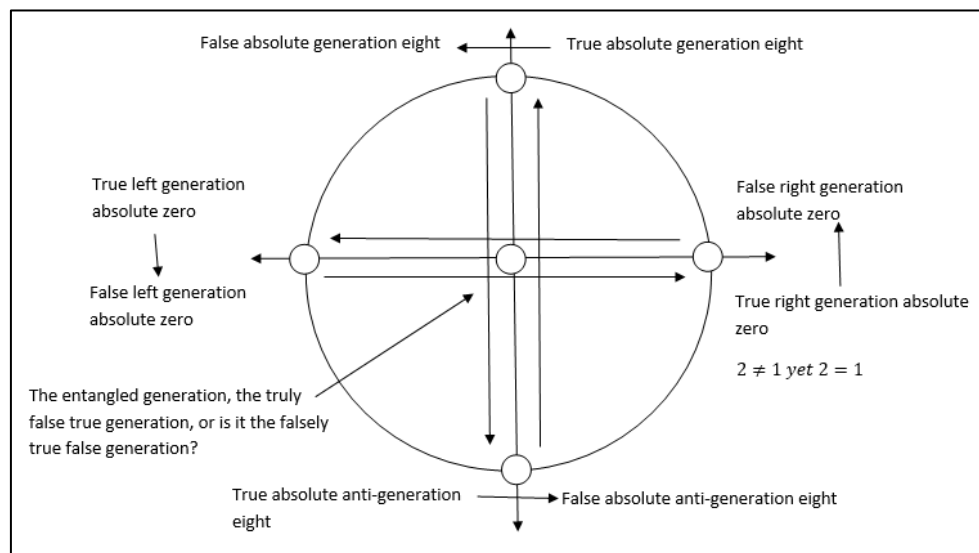
Therefore, if a mis-decision (a quantum value) is opposite to a decision (a non-quantum value), an fluid decision (a beyond non-quantum value, every possible value) is opposite to a non-decision (a beyond quantum value, a non-value - undefined), and an undecided decision is its own opposite (a half quantum half non-quantum value, hyper-quantum?), then it may be reasonable to assume that if earth was a quantum system then it would have the gravitation deceleration of  $-9.80665\text{m/s}^2$ .

Given the seven sub questions of the brain, there exists seven questions for the strong force, the weak force, and electromagnetism. But of course electromagnetism is unique in this regard as electromagnetism combines two types of communication. Therefore there are fraction questions in regards to electromagnetism. For example, one half where is electricity (Voltage), one half where is magnetism. One half when (perception) is it electricity (resistance?) one half when is it magnetism, one half what (sense) is electricity (the current?) one half what is magnetism, existing in fraction dimensions. This can also be applied to particles, for example what is an electron, where is it an electron, when is it an electron, why is it an electron, how is it an electron, and which way is the way of the electron? There is also the who question, which translates to can that electron be objectively identified and does that electron have a subjective identity? Considering electromagnetism is the combination of two communication areas, this can be translated to the brain, with the mechanism that combines two (or possibly more) areas of communication to create an altered form of communication being synaesthesia. Synaesthesia may be the Higgs mechanism, whereby the communication of mass gets combined with the communication of quarks, creating massive quark communication. It is not certain which communication quarks are, but what is certain is that they are quantum mis-communication and non-quantum communication. So therefore, given spin, which may be communicating orbits, gets combined with quarks that they create a three thirds communication of spinning massive quarks. And of course you can add another quarter communication of gravity, to combine spinning massive gravitating quarks, a four quarter synaesthetic communication existing in fraction communication dimensions. Therefore, it may be possible to combine the forces into a four-quarter unified force communication, but may not necessarily be necessary, just as a four-quarter communication of socially motivated unpleasant odour that brings crying laughter isn't necessary, or a four-quarter communication of visually acidic election rage isn't necessary. Possible, however producing something absurd, just as the combination of the four forces may produce. Just as when the communication of position and momentum get combined to create momentum position, where the more you know about position the less you know about momentum, perhaps when the forces combine the more you know about one force the less you know about the others. The four forces are not the only types of communication of the universe. Each brain area represents a type of communication and explains everything that we experience. Everything is a brain construct, with something yet nothing being external to the brain, the absolute brain. The contradiction, the brain, is communicating a non-



decision fluid decision, a hyper-fluid decision, whereas absolutely everything, the something yet nothing external to the brain, the between brain and the anti-brain, otherwise the absolute brain, is communicating an absolute decided (anti-non-decision) non-decision, a hyper-non-decision. Given the brain, nothing yet something (hyper-something), is a contradiction, and the absolute brain, something yet nothing (hyper-nothing), is a non-contradiction, perhaps there is a final layer of the hierarchy of the brain, that being the beyond brain, which is communicating the non-contradiction contradiction and the contradictory non-contradiction. The non-contradiction contradiction is hyper-nothing yet hyper-something. Absolutely hyper-something, or is it absolutely hyper-nothing? The beyond brain is the universal brain and connects every brain. A multiverse of sorts, that being a multiverse within one underlying universe, and that for every absolute brain, there is a separate multiverse, a multiverse of all possible brains. For example, in one multiverse colour doesn't exist, and what exists is grey-scale, as that brain is colourblind, and yet in another multiverse colour does exist, as that brain can sense colour. Another example is motion. In one multiverse motion comes in discrete chunks (non-motion), as that brain can't sense motion, and yet in another multiverse motion is smooth and continuous, as that brain can sense motion. In another multiverse objective reality is an illusion, as that brain perceives (when in time) objective reality, and in another multiverse objective reality is a delusion, as that brain non-perceives objective reality. Therefore, it can be illusion time, mis-illusion time ( an illusion that is not what it seems), fluid illusion time (an illusion which value changes in time), delusion time, illusion delusion time, and delusion illusion time, it all depends on what multiverse that brain has constructed., that is to say, if It is objective reality time, because if it's for example colour time, perhaps it's hue time, if it's sight time, it's expansion time, and if it's gravitational time, it's acceleration time Given the universal non-contradiction contradiction (or is it the contradictory non-contradiction?), perhaps the curvature of the universe is the hyper-non-curving hyper-curvature, absolute hyper-curvature, which is a false, which makes it true that it is hyper-curving hyper-non-curvature, which is false. The non-contradiction contradiction, and the contradictory non-contradiction is communicating that false is true, or is it that true is false? So therefore if false is true, then false is false, but if false is truly false, then false is true, thereby leading to something circular. An infinitely regressing cyclic paradox of a true false. If the brain had to be something, perhaps the brain is DNA, where the contradictory genetic code runs parallel to each other. One layer higher on the hierarchy is the absolute brain, possibly being RNA, which may be a DNA anti-DNA pair, then beyond the absolute brain is the beyond brain, for which it's underlying essence is uncertain. Perhaps hyper-DNA, which would be absolutely nothing yet absolutely something, which is false, which is true, which is false. Absolutely hyper-something. False RNA is true DNA. So if false RNA is true DNA, then false RNA is false DNA, which makes false RNA true DNA. A true false. A false true. Therefore, to know the beyond brain is hyper-DNA is know that it is true, which makes it false, which makes it true, so then perhaps the beyond brain is RNA, false RNA that is true RNA, which is false, which is true, which is false., so then perhaps the beyond brain is false DNA that is true DNA, which is true, which is false, which is true. So then perhaps the beyond brain is a neuron, which is false, which is true, which is false, as RNA and DNA start in the nucleus. Considering entanglement, perhaps this is why entanglement exists, because every brain in the universe may possibly be connected, by the universal brain, which is false, as the universal brain is false, which makes it a true, which makes It false. Therefore, entanglement is always opposite to what is expected, so if it is true that everything is entangled, then it is false that everything is entangled, and so therefore it must be true that nothing is entangled, so therefore it is false that nothing is entangled. Therefore both nothing and everything Is entangled, which is false,

so therefore neither nothing and everything is entangled, which is false. Given this, perhaps a black hole is the non-contradiction contradiction, which is the entangled generation, a neuron perhaps. A black holes false generation is a black holes true generation. A black holes false mass is a black holes true mass. A black holes false gravity is a black holes true gravity. A black holes false spin is a black holes true spin. Considering the equation for gravity introduced in this paper, it is uncertain that a black hole has gravity, as a black hole has no body, which may be a true false, as zero circumference divided by zero radius is undefined – a non-value, therefore it leads to the assumption that a black hole has non-gravity, which may be a false, which makes it true, which makes it false. Given the generations, perhaps a black hole is generation absolute zero of simultaneously both hemispheres, leading to two non-contradictions that equals one contradiction. Two equals one, which is true, which makes it false, which makes it true. So if it is true that a black hole is generation absolute zero of the right hemisphere, then it is false, then therefore the black hole must be a true generation absolute zero of the left hemisphere, which is false. This leads to the outcome that to know a black holes true generation would imply that you know its false generation.

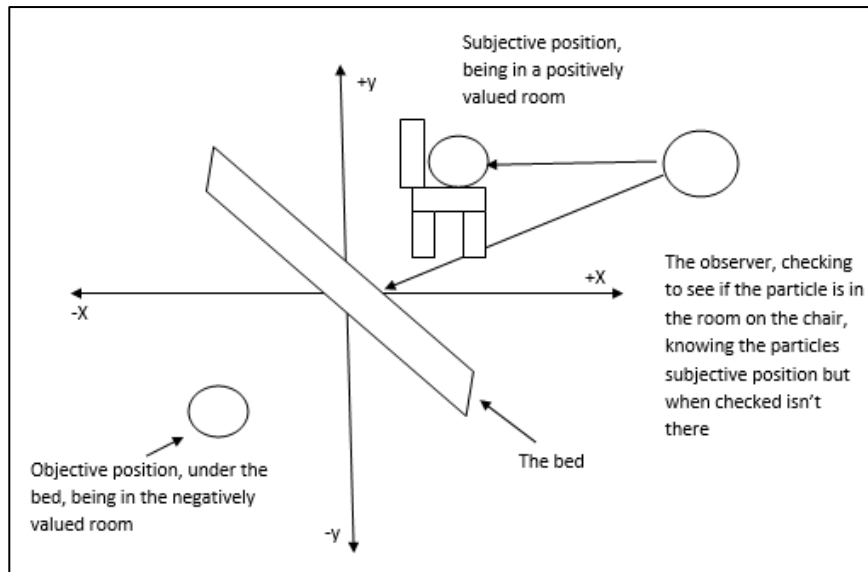


**Figure 9. False**

It is unknown if a black hole is also combining generation absolute eight of the hyper-hemisphere and generation absolute eight of the anti-hyper-hemisphere. Perhaps it combines a generation anti-generation absolute eight contradiction and a generation absolute zero of the right anti-left hemisphere and generation absolute zero of the left ant-right hemisphere creating a non-contradiction to create a hyper-non-contradiction yet hyper-contradiction, which makes it an absolute complete hyper-contradiction, which is false. That is under the assumption that the non-contradiction is lateralized to the left, which may be false, which makes it true, which makes it false. Therefore, it may be possible that it is the contradictory non-contradiction, or is it the non-contradiction contradiction, thus to know the lateralization of the word non-contradiction and the word of contradiction is to know its false lateralization, therefore to know the truth of the matter, is to know what you know is false. Perhaps the closer you are to the black holes center, the further reduction in dimensions there is, with the implication that there are many event horizons, each representing a downsizing of a dimension, say for example once you pass the third dimension even horizon and exist in two dimensions, the only direction you can travel is forwards and right, or

backwards and left, and the direction to escape is to travel beside, or clockwise, for which you cannot, which is false, a true false, or is it a false true? To take this further, to know what created the universe, possibly a black hole, is to know that if you knew what created the universe is to know that what you know is false, which is true, a falsely true false, or is it a truly false true? Again, a cyclic paradox. So therefore, can something escape a black hole? The answer is always opposite to what you expect. Therefore, if a black hole is nothing, therefore it is something, and if it is something, then therefore it is nothing, and if it's both, it's neither, and therefore if it's neither, it's both. This can be applied when describing a universal property. So, if the universe is in hyper-motion, the universe actually is anti-hyper-motion, and if it is anti-hyper-motion then therefore the universe is in motionless fluid motion (hyper-motion), that is to say if the universe as a property is absolutely something, and so if the universe as a property is absolutely nothing, then therefore it is hyper-motionless, and if it is hyper-motionless then therefore it is actually absolute hyper-motion (anti-motion motion). The universe isn't cyclic, which means the universe is cyclic, and so if the universe is cyclic, then the universe isn't cyclic. The big bang was the beginning of the universe; therefore the big bang wasn't the beginning of the universe, and if the big bang wasn't the beginning of the universe, then the big bang was the beginning of the universe. The universe has an age, therefore the universe is ageless, therefore the universe has an age. A cyclic paradox that doesn't cycle. And if it's neither cycling nor non-cycling, it's both, and if it's both, it's neither. If it's all four absolute generations then it's none. If it's simultaneously none of the absolute generations then it's all. Even to say it is a paradox isn't true, it's false that it's a paradox, which makes it true that it is a paradox. A paradoxically non-paradoxical paradox, or is it a non-paradoxically paradoxical non-paradox? To know the true beginning of the paradox is to know the false beginning, and to know the true end of the paradox is to know the false end. Given the possible existence of the anti-brain, the anti-brain can be thought of as existing separately together with the brain that we experience, where the anti-brain exists upside down, backside front and left-side right, and so on, just as the brains position may be backside front, as the left hemisphere controls the right side of the body, and vice versa, so therefore in the anti-multiverse, the anti-brain is frontside forward.

What needs to be taken into account is the existence of both objective and subjective reality. So therefore there is both objective position and subjective position. A scenario where this plays out is an observer who walks to a closed door and asks a particle inside the room if they are in the room. The observer has yet to check, however the particle responds with "Yes, I am in the room" The observer interprets that as being in the room on the chair, so therefore that is the interpretation of the particles objective position but does not realise that is the particles subjective position, so when the observer opens the door to the room and sees that the particle isn't there in the positively valued room on the chair. The observer has yet to check the negatively valued room, under the bed, where the particles true objective position is.



**Figure 10. Under the Bed**

The observer then thinks where in the room is the particle. “Is the particle under the bed?” the observer asks themselves, however the observer is uncertain about this, therefore the particle from the observer’s reference frame is a generation three uncertainly mis-certain objective particle position. The observer then looks under the bed, and the uncertainly mis-certain position of the generation three particle becomes a generation six certainly certain objective wave position.

Considering DNA is (possibly) the brain, perhaps almost the entire hierarchy can be found on DNA. Where one side of the helix is the left hemisphere and the other side is the right hemisphere. One half of the entire DNA strand of one helix is objective reality and the other half is subjective reality. Within the objective reality strand there exists fraction strands for all general areas and continues to fraction all the way to the bottom of the hierarchy.

Given a neuron maybe being the beyond brain, therefore neurons have a role in constructing decisions, which is false, and so therefore must be true, and so therefore must be false. So therefore, a neurons location in the brain constructs recognition (where), and the variations of location being mis-located, dis-located, and a fluid location. A neuron type constructs sense (what), with its variations being a non-type, a mis-type, and a fluid-type. A neuron firing constructs perception, with its variations being non-fire, mis-fire, and fluidly firing, and with the geometry of the neural network itself, whether it’s a 1-dimensional (line) geometry constructing a non-decision, or a six dimensional neural network geometry constructing a decision, which therefore all of these assumptions are false, and so therefore must be true, and so therefore must be false.

There is an argument to be made that chemicals represent mathematics, where they are one in the same. Not only this, perhaps there is a mathematical model for each general area, say for instant sight communication, which is geometric communication, spatial communication, which is plane communication, depth communication, which is a point communication (focal point), orientation communication, which is line communication, visual communication, which is trigonometry communication, motion communication, which is angle communication, and colour communication, which is degrees communication. So therefore, given the model of the atom, each communication type of the atom represents a type of mathematical operation. For example, the atom in itself is

equals, equalling an element, the nucleus is greater than or equal to 1, spin is lesser than or equal to 1, quarks are addition that is something equal to three, gluons are to the power of which is equal to a value, gravity is division, which equals a value, and the center is subtraction, which is equal to a value. Therefore, given gravities hypothesised “where” is circumference and “when” is the radius, appearing in an equation, equalling a “where is when” (it accelerates) this may also be applied to the other forms of communication of the atom, for example a gluon equation may look like:

$$\textit{Where}^{\textit{when}} = \textit{What}$$

$$(\textit{Recognition}^{\textit{Perception}} = \textit{Sense}) = \textit{Communication}$$

$$\textit{Space}^{\textit{Time}} = \textit{Space is time}$$

And for gravity:

$$\frac{\textit{Where}}{\textit{When}} = \textit{What}$$

$$\frac{\textit{Recognition}}{\textit{Perception}} = \textit{Sense}$$

$$\frac{\textit{Space}}{\textit{Time}} = \textit{Space is time}$$

$$\left( \frac{\textit{Circumference space}}{\textit{Radius time}} = \textit{Accelerating space is acelerating time} \right) \\ = \textit{Gravitational communication}$$

$$\left( \frac{\textit{Circumference space}}{\textit{Misradius time}} = \textit{Accelerating space is decelerating time} \right) \\ = \textit{Gravitational uncommunication}$$

$$\left( \frac{\textit{Miscircumference space}}{\textit{Misradius time}} = \textit{Decelerating space is decelerating time} \right) \\ = \textit{Gravitational miscommunication}$$

$$\left( \frac{\textit{Fluid circumference space}}{\textit{Fluid radius time}} = \textit{F acceleration space is F acceleration time} \right) \\ = \textit{Gravitational fluid communication}$$

$$\left( \frac{\textit{Noncircumference space}}{\textit{Nonradius time}} = \textit{Nonacceleration space is nonacceleration time} \right) \\ = \textit{Gravitational noncommunication}$$

And for quarks:

$$\textit{Where} + \textit{When} = \textit{What}$$

$$\textit{Recognition} + \textit{Perception} = \textit{Sense}$$

$$\textit{Space} + \textit{Time} = \textit{Space is time}$$

$$\textit{One up space} + \textit{Two down time} = \textit{Three in space is three in time}$$

And for the center:

$$\textit{Where} - \textit{When} = \textit{What}$$

$$\textit{Recognition} - \textit{Perception} = \textit{Sense}$$

$$\textit{Space} - \textit{Time} = \textit{Space is time}$$

And for spin:

$$\textit{Where} < \textit{When} = \textit{What}$$

$$\textit{Recognition} < \textit{Perception} = \textit{Sense}$$

$$\textit{Space} < \textit{Time} = \textit{Spacetime}$$

And for the nucleus:

$$\textit{Where} > \textit{When} = \textit{What}$$

$$\textit{Recognition} > \textit{Perception} = \textit{Sense}$$

$$\textit{Space} > \textit{Time} = \textit{Space is time}$$

$$\textit{Neutron space} \geq \textit{Proton time} = \textit{Stability space is stability time}$$

And for the atom:

$$(\textit{Where} = \textit{When}) = \textit{What}$$

$$(\textit{Recognition} = \textit{Perception}) = \textit{Sense}$$

$$(\textit{Space} = \textit{Time}) = \textit{Spacetime}$$

$$(\textit{Number space} = \textit{Weight time}) = \textit{Element space is element time}$$

For objective reality:

$$\textit{Denial space} + \textit{Delusion time} = \textit{Nonreal space is nonreal time}$$

For everything:

$$\textit{Space is false} + \textit{Time is true} = \textit{True in space is false in time}$$

$$\textit{Space is true} + \textit{Time is false} = \textit{False in space is true in time}$$

$$\textit{A truly false space} + \textit{a falsely true time} = \textit{A falsely true space is truly false time}$$

$$\textit{A falsely true space} + \textit{a truly false time} = \textit{A truly false space is falsely true time}$$

$$\textit{Paradoxical space} + \textit{Nonparadoxical time} = \textit{Nonparadoxical space is paradoxical time}$$

$$\textit{Nonparadoxical space} + \textit{Paradoxical time} = \textit{Paradoxical space is nonparadoxical time}$$

$$\textit{Space is nothing} + \textit{Time is something} = \textit{Something space is nothing time}$$

$$\textit{Space is something} + \textit{Time is nothing} = \textit{Nothing space is something time}$$

$$\textit{Known space} + \textit{Unknown time} = \textit{Unknown space is known time}$$

$$\textit{Unknown space} + \textit{Known time} = \textit{Known space is unknown time}$$

$$\textit{What can't be known can be known, what can be known can't be known}$$

The next question to ask, what is mis-subtraction, mis-to the power of, mis-division, and mis-addition, that being negatives, as a mis-decision is quantum, revealing an answer that isn't what it seems. Given these equations, there are questions that arise from mathematics being the communication of chemicals, and that is the general area itself, as every lower form of communication stems from a general area, that being, which communication is a general chemical, what is a general chemical, when is it a general chemical, where is it a general chemical, how is it a general chemical, why is it a general chemical, can a general chemical be identified (who), and which way is the way of the general chemical? As the general area of communication is the combination of all communication areas that stem from that general area of communication, such that a general chemical what is the combination of all what of the sub areas of a general chemical communication, does there exist a general formula that combines all areas of generalised mathematical communication, a general chemical formula? A general mathematical formula?

To imply that there will ever be a complete model of the universe is false, so therefore the model will forever remain incomplete, which is false. A complete paradox, an incomplete paradox, a complete non-paradox, and an incomplete non-paradox? Incompletely complete? Completely incomplete? A paradoxically non-paradoxical paradox? A non-paradoxically paradoxical non-paradox? Where is universal space? When is universal time? What is universal spacetime? The universe, the beyond brain, everything, beyond nothing, or beyond something? One or the other, both or neither, all or none?

One hemisphere may be objectively subjective, and one hemisphere might be subjectively objective, so which one is it?

Given the chemical equations, it may be that there is only a three question (+1 which communication?) model, but for now, it is uncertain if that is the case. Everything, and all that stems from everything is a biosystem, which is false (and true).and while the model of the absolute brain and all that sits under its hierarchy isn't a model of the beyond brain, the universe, it does include the universe (or does it exclude it?).

Communication and its variants, that being non-communication, mis-communication, fluid-communication, communicating mis-communication (or mis-communicating communication, which one is it, I can't decide which), fluidly communicating non-communication and non-communicating fluid communication are fundamental (including decisions), and when applying the seven question model to each area of communication, has the potential to explain what you want to explain.

### References

1. N Oshita, J Yokoyama. Creation of an inflationary universe out of a black hole. *Physics Letters B*: 2018; 785: 197-200. <https://doi.org/10.1016/j.physletb.2018.08.018>
2. L Boyle, K Finn, N Turok. CPT-Symmetric Universe. 2018; *arXiv*: 1803.08928. doi: <https://doi.org/10.48550/arXiv.1803.08928>
3. P Steinhardt, N Turok. A Cyclic Model of the Universe. 2002; *arXiv*: arXiv:hep-th/0111030. doi: <https://doi.org/10.48550/arXiv.hep-th/0111030>
4. Moon fact sheet. Nasa. <https://nssdc.gsfc.nasa.gov/planetary/factsheet/moonfact.html>. Accessed March 8, 2023



